

MONITOR GARAGE STATUS WITH AUTOMATIC OPEN/CLOSE ON DESKTOP

USING WEMOS D1, ULTRA SONIC SENSOR, 2-CHANNEL RELAY AND IOT
PLATFORM (THINGIO.AI)



[FEATURES](#) [PRICING](#) [FAQ](#) [SUPPORT](#) [BLOG](#) [TUTORIAL](#) [API DOCS](#)

[LOGIN](#)

[REGISTER](#)

Best IoT Platform for Raspberry Pi, NodeMCU and ESP8266 Projects

Create Stunning Dashboards and Vizualzitions for your IoT Projects

[Get Started](#)


[Watch Demo](#)

[Join Our Referral Program](#)

[Invite](#)





 Continue with Google

or

SIGNUP TO GET INSTANT ACCESS.

Name

Enter Name

Email address

Enter email

Password

Retype Password

Contact Number*

Enter Mobile Number



I'm not a robot



I am continue with Google account

Then as your wish... 😊



Projects

+ Create new project

Search By Project Name

Garage Door Open/Close ⚙️

ID : 5c03f98f30b88914c229d296 Dec 2, 2018

View Project

LDR Light Control ⚙️

ID : 5c023d0100581d574cb33ff6 Dec 1, 2018

View Project

Temp Control Fan ⚙️

ID : 5c017f3d16052f680fa56062 Nov 30, 2018

View Project

Temperature ⚙️

ID : 5c00ff03562a9568106423fb Nov 30, 2018

View Project

People Counter ⚙️

ID : 5bee74174139ed3c65cf32a8 Nov 16, 2018

View Project

Ultra Sonic ⚙️

ID : 5bed77664139ed3c65cf25a7 Nov 15, 2018

View Project

Here I am already done with this project so it's showing Garage Door Open/Close.

So you have to create new project.





Projects

Search By Project Name

View Project

Create A Project

Project Name

Create

+ Create new project

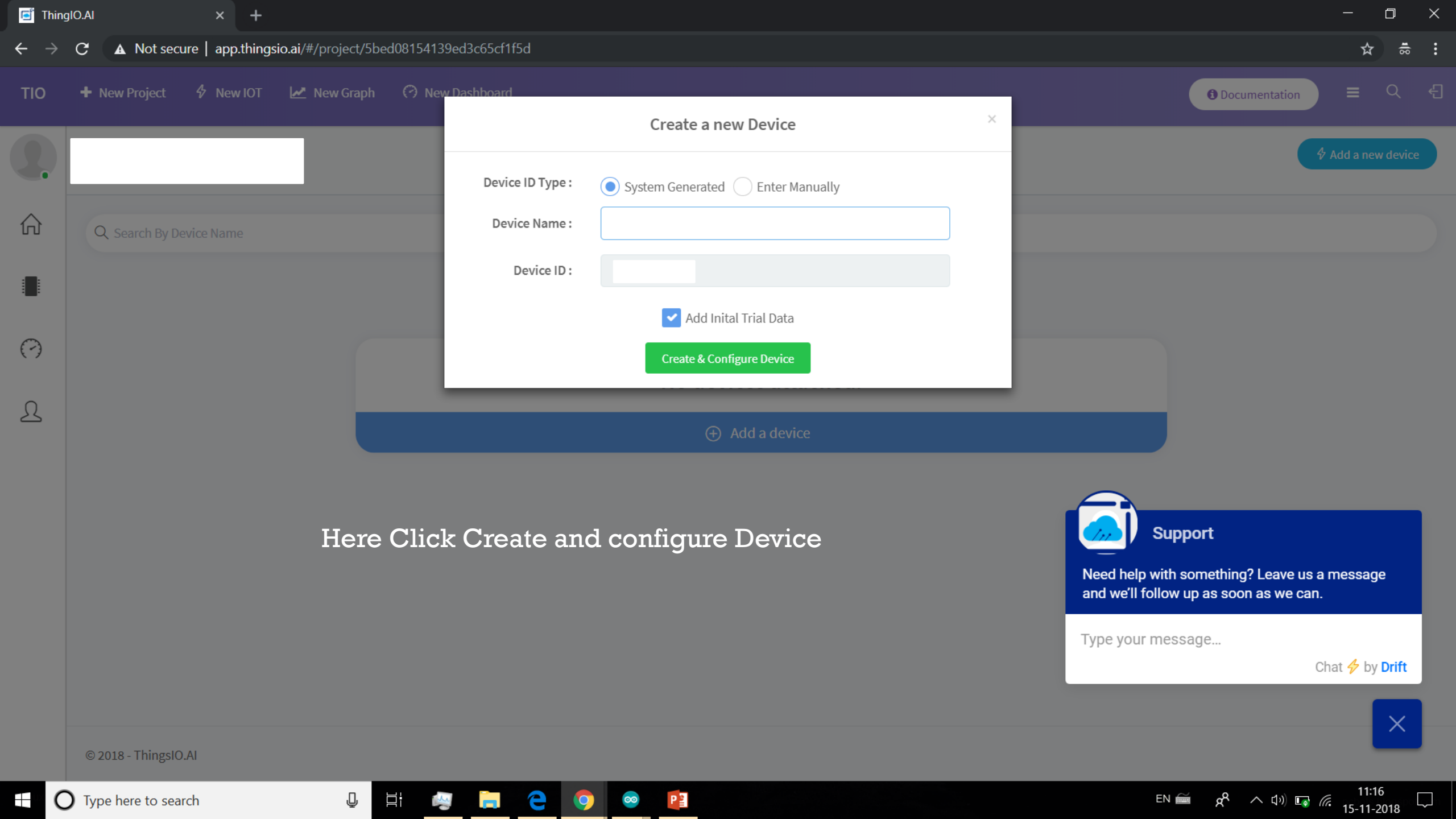
Support

Need help with something? Leave us a message and we'll follow up as soon as we can.

Type your message...

Chat ⚡ by **Drift**

✕



Add a new device

Create a new Device

Device ID Type : System Generated Enter Manually

Device Name :

Device ID :

Add Initial Trial Data

Create & Configure Device

Search By Device Name

+ Add a device

Here Click Create and configure Device

Support

Need help with something? Leave us a message and we'll follow up as soon as we can.

Type your message...

Chat by Drift





Configure Device - [REDACTED]

General

Device ID

Created - Nov 15, 2018
Updated - Nov 15, 2018

Parameters

<input type="text"/>	decimal	✕
<input type="text"/>	decimal	✕
Add a new property		

Energy Parameter*

Transformation*

Argument*

Aggregate

And then click on Update Device

Support

Need help with something? Leave us a message and we'll follow up as soon as we can.

Type your message...

Chat ⚡ by Drift



Configure Device - [redacted]

General

Device ID: [redacted]

Created - Nov 15, 2018
Updated - Nov 15, 2018

Energy Parameter*: [redacted]

Transformation*: Multiply


Argument*: 1

Aggregate: [redacted]

Parameters


[redacted]	decimal	✕
[redacted]	decimal	✕

Update Device Close



Device updated successfully

OK



Support

Need help with something? Leave us a message and we'll follow up as soon as we can.

Type your message...

Chat ⚡ by Drift





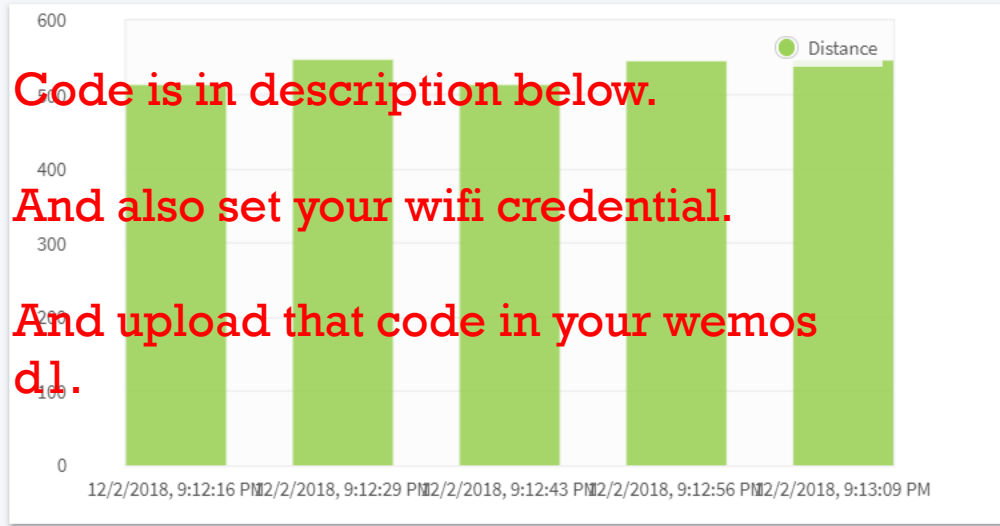
Open/Close

Quick Analysis ▾ Sample Codes 📄 Create Graph ⚙️ Configure Device

Data (Distance)

546

Units



Data Point

Dec 2, 2018, 9:13:09 PM

546
Distance

1
Open=0/Close=1

Last 5 data

Refresh

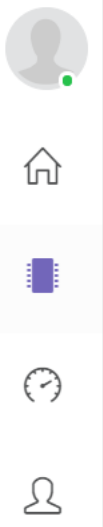
1	Slave ID - 1	Dec 2, 2018, 9:13:09 PM
2	Slave ID - 1	Dec 2, 2018, 9:12:56 PM
3	Slave ID - 1	Dec 2, 2018, 9:12:43 PM
4	Slave ID - 1	Dec 2, 2018, 9:12:29 PM
5	Slave ID - 1	Dec 2, 2018, 9:12:16 PM

Device Graphs

Here Open/Close is 1.
So Garage Door Is Close.

No Graphs Created

Create Graph



Device - Garage Door Open/Close

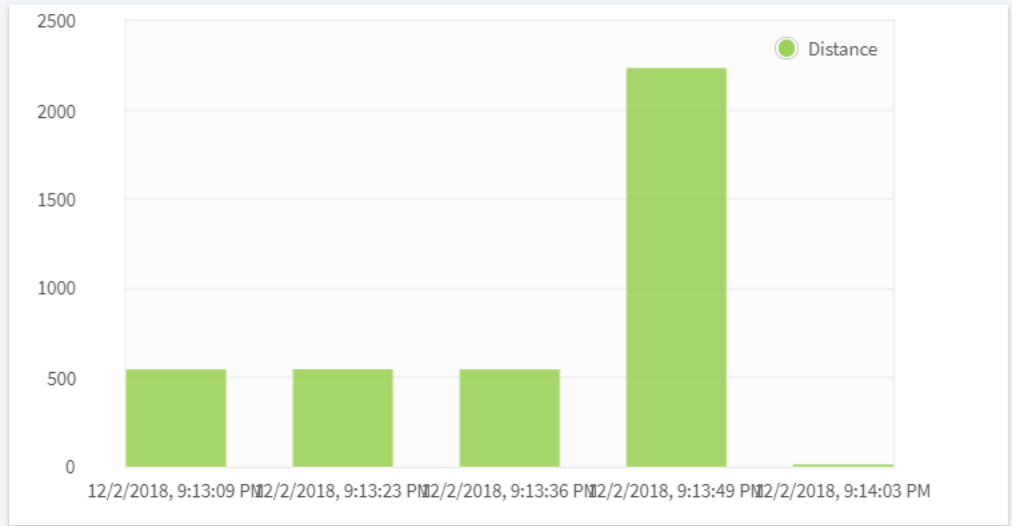
Device ID : 6112072 | Project : Garage Door Open/Close

Quick Analysis ▾ Sample Codes 📄 Create Graph ⚙️ Configure Device

Data (Distance)

13

Units



Data Point

Dec 2, 2018, 9:14:03 PM

13
Distance

0
Open=0/Close=1

Last 5 data

Refresh

1	Slave ID - 1	Dec 2, 2018, 9:14:03 PM
2	Slave ID - 1	Dec 2, 2018, 9:13:49 PM
3	Slave ID - 1	Dec 2, 2018, 9:13:36 PM
4	Slave ID - 1	Dec 2, 2018, 9:13:23 PM
5	Slave ID - 1	Dec 2, 2018, 9:13:09 PM

Device Graphs

**Here Open/Close is 0.
So Garage Door Is Open.**

No Graphs Created

Create Graph

